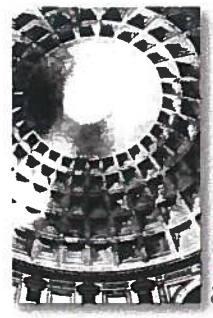
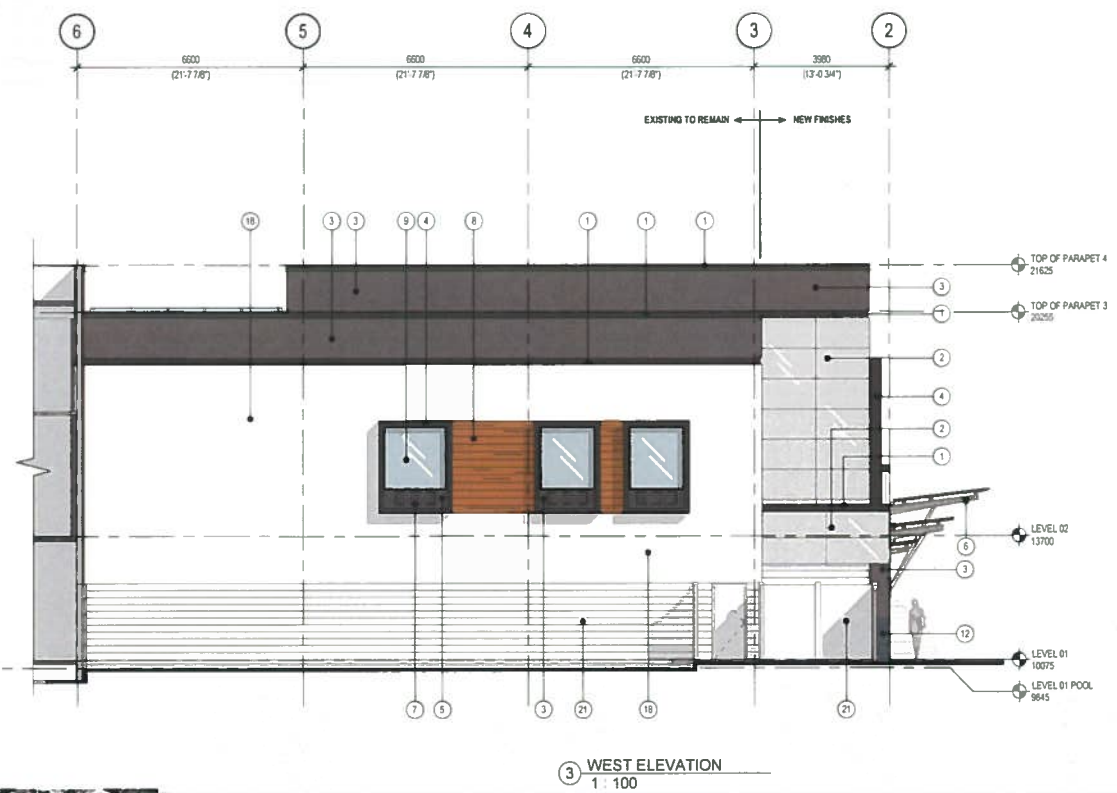


MATERIAL LEGEND

- 1 PF METAL FLASHING - CASCADIA METALS 'SLATE GRAY'
- 2 PF METAL CLADDING - AL13 'SILVER METALLIC' MC309'
- 3 COMPOSITE PANEL - SWISS PEARL 'AGATE 7219'
- 4 PF METAL TRIM - CASCADIA METALS 'SLATE GREY'
- 5 PERFORATED METAL SCREEN - MATCH SWISS PEARL 'AGATE 7219'
- 6 GLASS / ALUMINUM / METAL CANOPY
- 7 PTAK HVAC UNIT (BEHIND PERFORATED METAL SCREEN)
- 8 PF METAL PANEL - LUX PANEL 'FIR'
- 9 ALUMINUM WINDOW / DOOR - PERMODIC BLACK
- 10 COMPOSITE PANEL - TRESPA 'ENGLISH RED'
- 11 PF METAL PANEL - AL13 'SLATE SD330'
- 12 30mm 'BLUE PEARL GRANITE'
- 13 MASONRY REMOVED
- 14 STOREFRONT GLAZING - PERMODIC BLACK
- 15 COMPOSITE PANEL - TRESPA 'ENGLISH RED'
- 16 COLOURED GLAZING - VANCEVA 'BLUE 2566'
- 17 PF METAL - AL13 'SILVER METALLIC' MC309'
- 18 EXISTING STUCCO - PAINTED
- 19 COMPOSITE PANEL - SWISS PEARL 'BLACK VELVET 9221'
- 20 TEMPERED GLASS PATIO SCREEN IN PAINTED METAL FRAME
- 21 EXISTING TO REMAIN
- 22 PF METAL - AL13 'CHARCOAL METALLIC' MC308'
- 23 MATCH DOOR / WINDOW FRAME
- 24 EXISTING SIGNAGE
- 25 NEW SIGNAGE



PRAXIS
architects inc.

RED LION
3366 DOUGLAS ST, VICTORIA, BC V8Z 3L3
PROJECT NO.19-004

PROPOSED CHANGES TO EXISTING ELEVATIONS
2020-02-11

