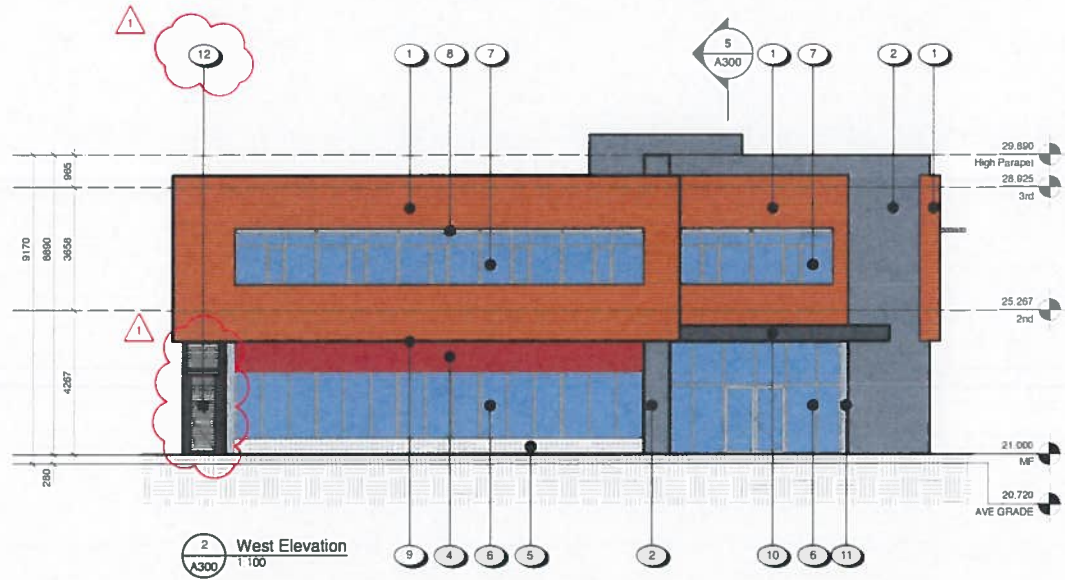
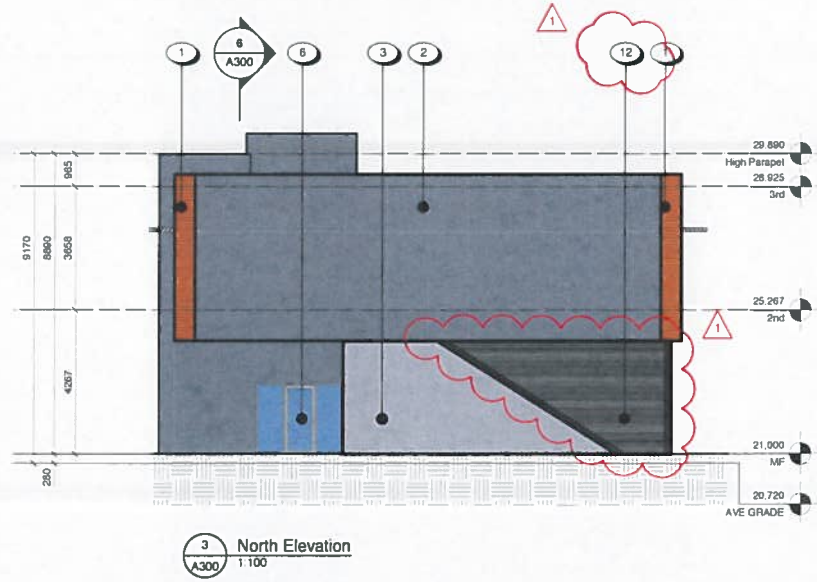


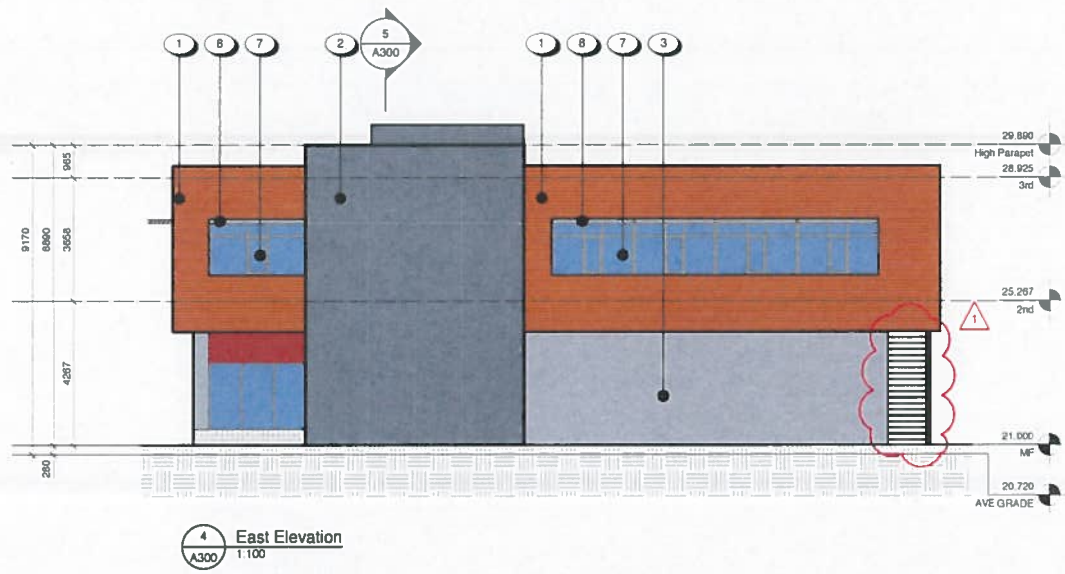
1 South Elevation  
A300 1:100



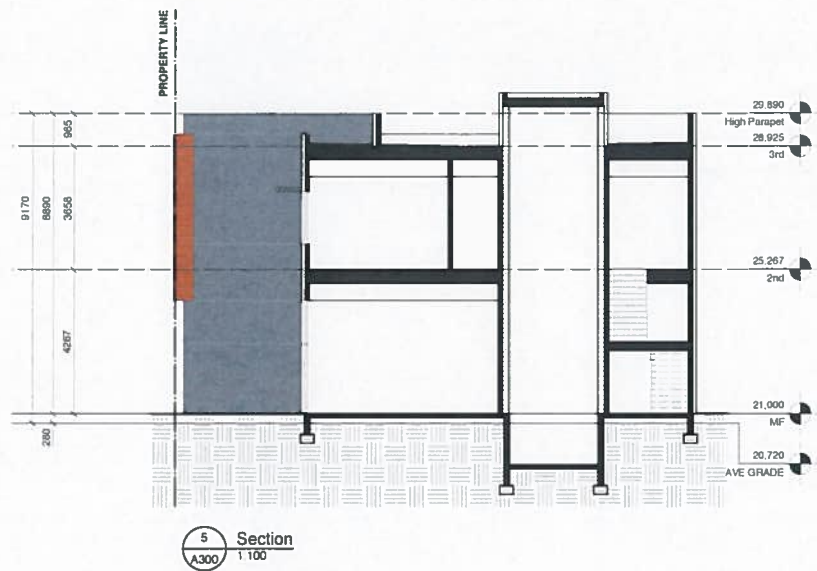
2 West Elevation  
A300 1:100



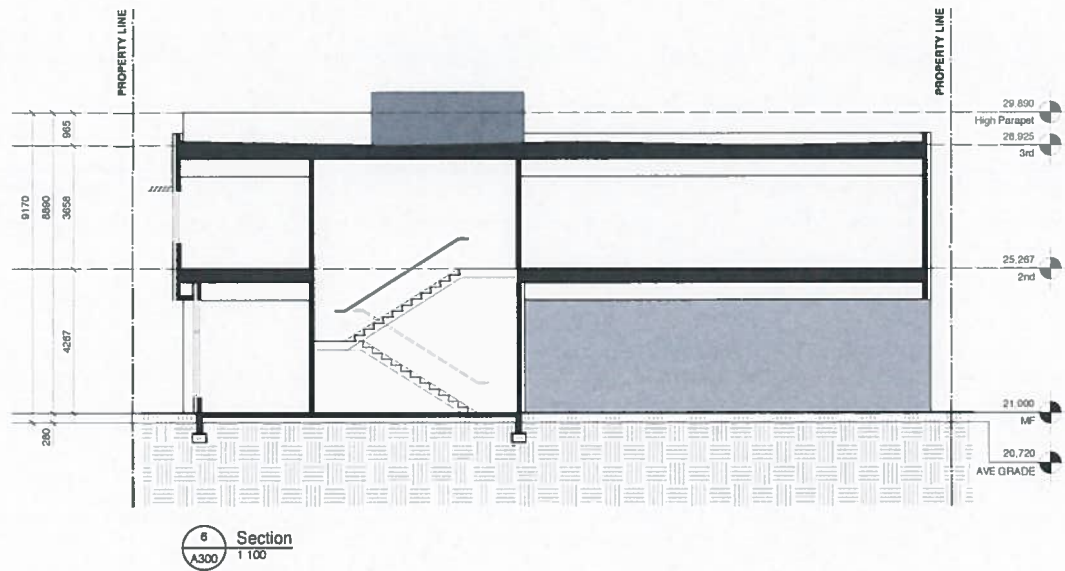
3 North Elevation  
A300 1:100



4 East Elevation  
A300 1:100

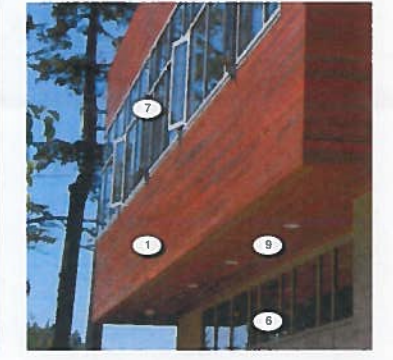
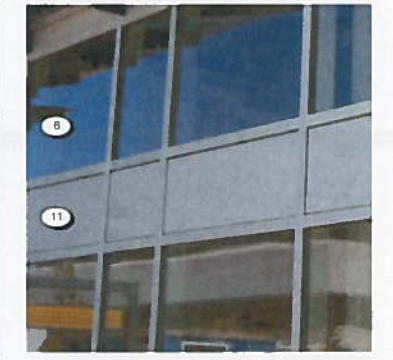
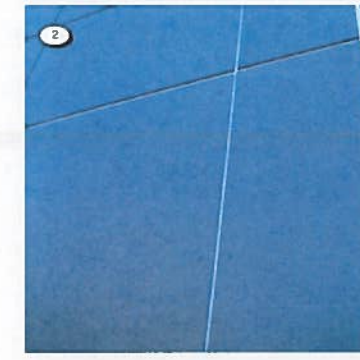


5 Section  
A300 1:100



6 Section  
A300 1:100

- MATERIALS & FINISH KEY**
- 1 STAINED CEDAR WOOD RAIN SCREEN CLADDING
  - 2 PANELIZED FIBRE CEMENT RAIN SCREEN CLADDING
  - 3 EXPOSED ARCHITECTURAL CONCRETE
  - 4 RED SIGNAGE BAND
  - 5 CERAMIC TILE
  - 6 THERMALLY BROKEN ALUMINIUM STOREFRONT GLAZING SYSTEM
  - 7 THERMALLY BROKEN ALUMINIUM WINDOWS
  - 8 ALUMINIUM SUNSHADE LOUVERS
  - 9 WOOD SOFFITS C/W EXTERIOR SOFFIT DOWNLIGHTING
  - 10 ALUMINIUM AND TRANSLUCENT GLASS CANOPY
  - 11 PANEL TO MATCH ANODIZED ALUMINIUM
  - 12 ALUMINIUM SECURITY GATE AND TRELIS, POWDER COATED



1	23 DEC 2020	Revised for Planning, D.P.
2	13 DEC 2019	Issued for Planning, D.P.
3	13 DEC 2019	EDN A300 Complete/Building, rev.
Author:	GP	Scale:
Drawn:	1:100	Project:
Check:		Client:

NOTE: All dimensions are shown in millimeters

0 2 500 5 000mm

1:100

**RECEIVED**  
DEC 24 2020  
PLANNING DEPT.  
DISTRICT OF SAANICH

de Hoog & Kierulff architects

VICTORIA OFFICE: 877 FULTON ST. VANCOUVER OFFICE: 1023 BROADVIEW ST. W. VANCOUVER, BC V6Z 2K4  
T: 250 656 5367 F: 250 656 5312

3415 Douglas Street  
Saanich, BC

Elevations & Sections

A300 1